

FLIR SC2200-S

Near Infrared Cameras With Extended Wavelength from 0.8 to 2.5 μm

- Spectral response from 800 nm to 2500 nm
- High sensitivity MCT focal plane array camera
- High quality thermal images of 320x256 pixels
- Frame rate up to 206 Hz full frame
- External triggering capabilities
- Wide dynamic range
- USB2 and CAMLINK digital video interface
- Standard C mount for lenses



FLIR SC2200-S Features

The SC2200-S camera is a high sensitivity ShortWave Infrared camera with extended wavelength.

High sensitivity

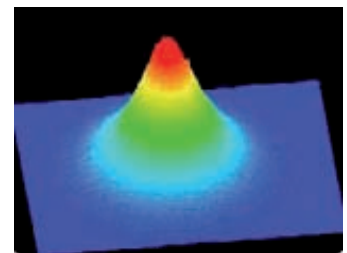
The SC2200-S camera provides an extraordinary sensitivity in the shortwave region of the infrared spectrum. Its unique cut off spectral sensitivity at 2.5 μm makes this camera unique in many applications such as drug concentration evaluation or laser beam profiling.

Versatile and simple

With its USB2 and CAMLINK digital video output, the SC2200-S is compatible with our ALTAIR imaging software. ALTAIR intuitive user interface allows click and go setup of the camera. ALTAIR displays and stores radiometric images at full frame rate to the hard disk with full 14 bit dynamic range.

Spectral Tuning Capability

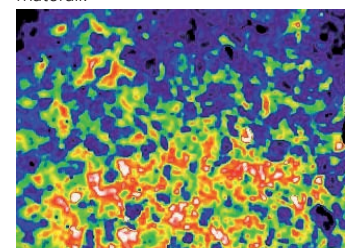
The SC2200-S camera features a 1 inch filter holder thus allowing selection of spectral subbands to adapt the response of the system to the application. The fully removable C-Mount interface makes the camera to be easily integrated into complex optical instruments such as interferometers or spectrometers.



The SC2200-S is a perfect choice for laser beam profiling thanks to its extraordinary high sensitivity.



The extended spectral range of the camera allows to see thru materials such as paint or blood. It also emphasizes water or ice presence into material.



The SC2200-S provides crystal clear images of silicon based components such as Si wafers or solar cells.

Camera Functions



- 1 High performance FPA with TEC Cooler
- 2 USB 2.0 / Camlink Interface
- 3 Filter Holder
- 4 Smart trigger Input with Ultra Low Jitter
- 5 High quality S-Video
- 6 Removable C-Mount interface for integration into spectroscopes

Software

- **Altair radiometric software**
Ease of use, flexible layout, real time storage, camera control, radiometric features
- **Software development Kit (C++ / Labview)**

Accessories

- Spectral filters
- Battery pack for up to 4 hours autonomy
- USB advanced acquisition trigger module



Training

FLIR cooperates with Infrared Training Centre, an independent, ISO certified, worldwide training facility. ITC offers infrared training, certifications accepted by many standardization organizations, and specialized instruction in various application areas. For more info visit www.infraredtraining.com

FLIR SC2200-S Specifications

Features*

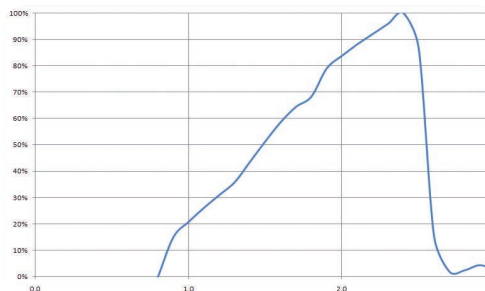
Sensor type	HgCdTe (MCT)
Waveband	0.8 - 2.5 μ m
Pixel resolution	320 x 256
Cooler	Thermo-electric cooler
Well fill capacity	1.38 Me-
Image capture	Snap shot IWR
Frame rate	Programmable up to 206 Hz full frame
Sub array windowing	User defined size arbitrary location
Frame rate in subwindow	Up to 5 kHz

Electrical Interfaces

Digital video & commands	USB2 & CAMLINK
Input voltage	80-240 VAC
Analogue video	S-Video 50 Hz or 60 Hz
Input trigger	LVTTTL
Trigger jitter	200 ns

Mechanical Interfaces

Size (w/o lens) (LxWxH)	169x106x90 mm (head) / 254x106x232
Weight (w/o lens)	1,1 kg
Base mounting	Standard photo camera
Optical interface	C Mount
Optical filter interface	1" diameter removable



Typical Camera Spectral Sensitivity

Please contact your local FLIR office to define the best configuration for your application.



www.flir.com/thg